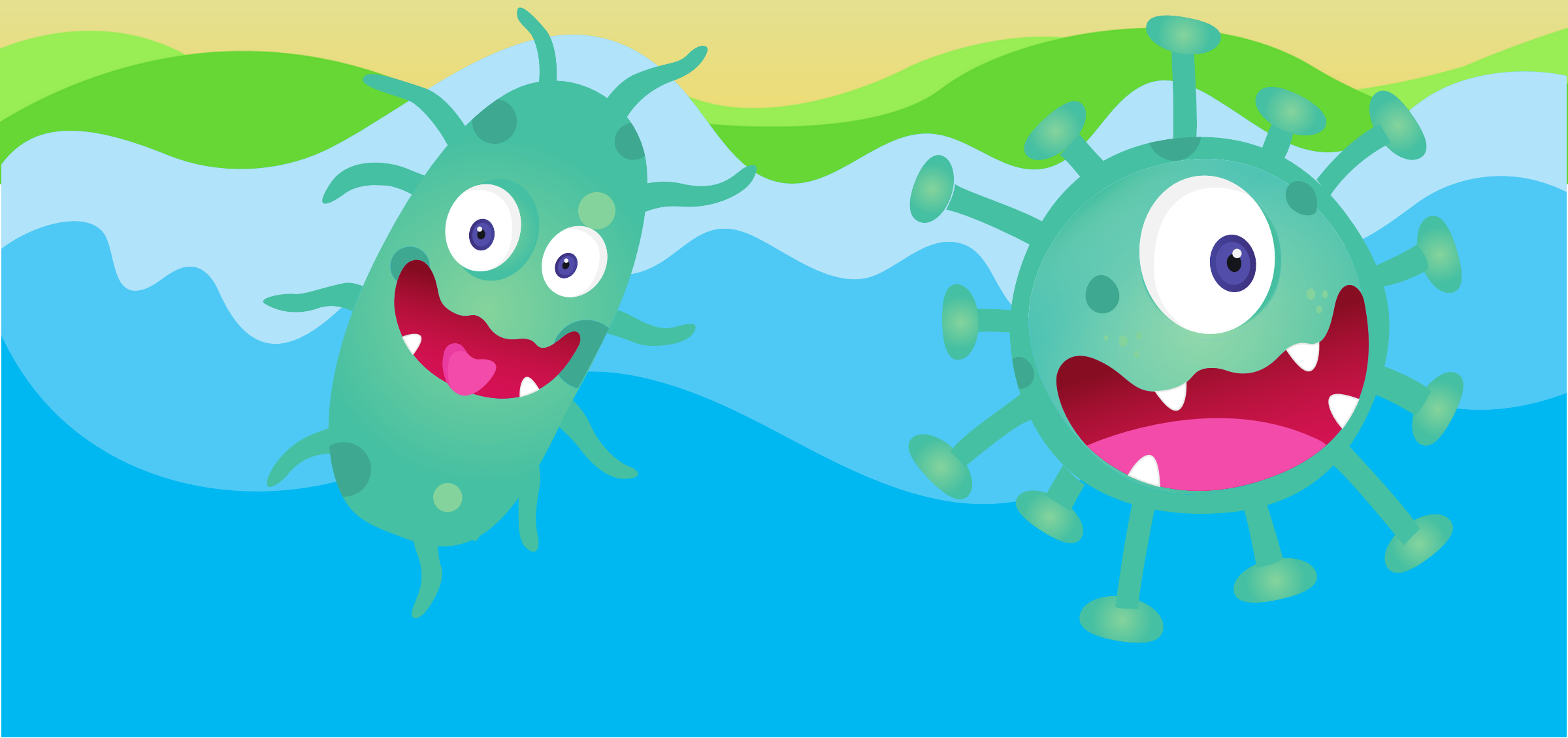
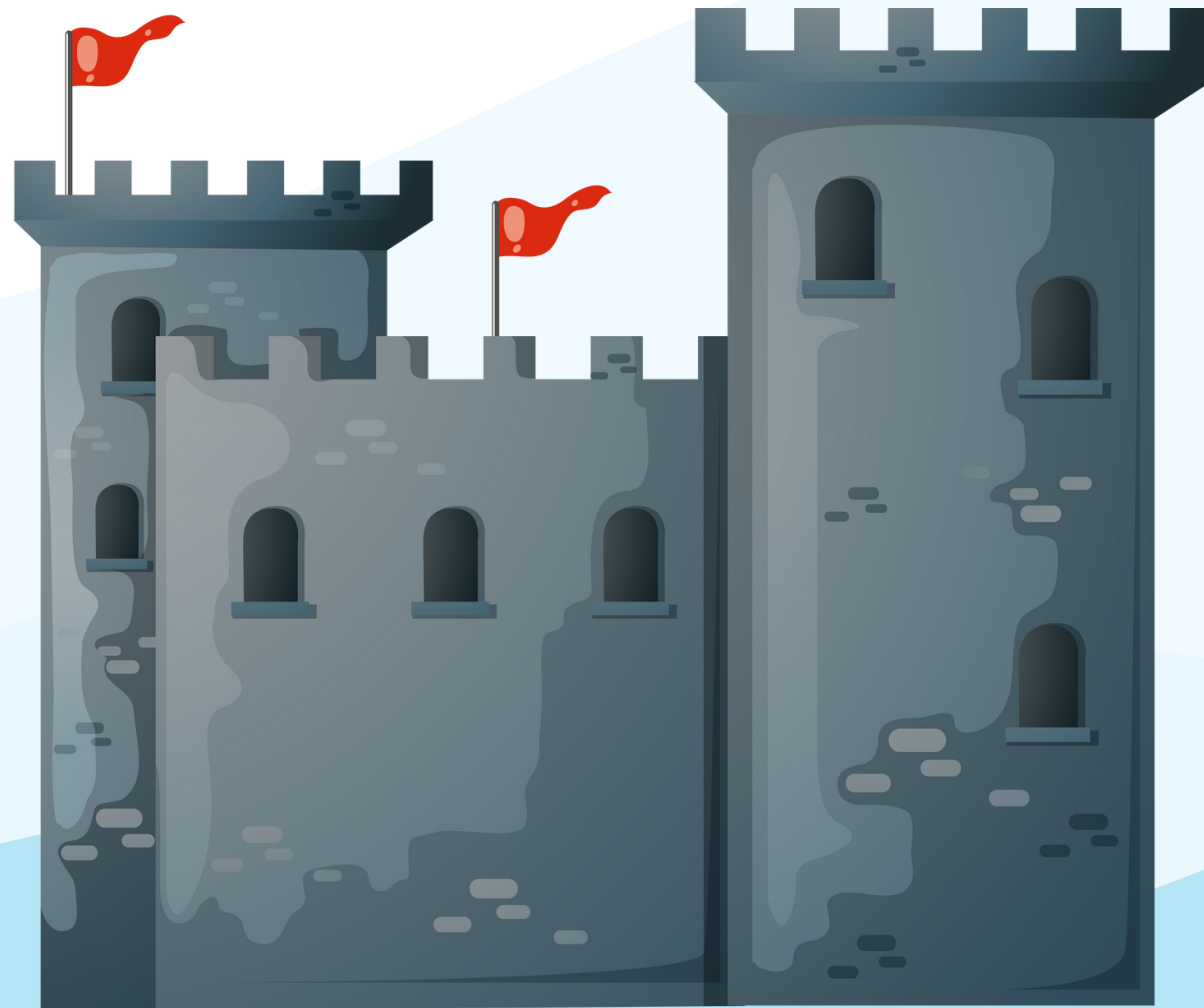


EXPLAINED FOR KIDS
BY TOBIAS STEUBE

ANTIMICROBIAL RESISTANCE

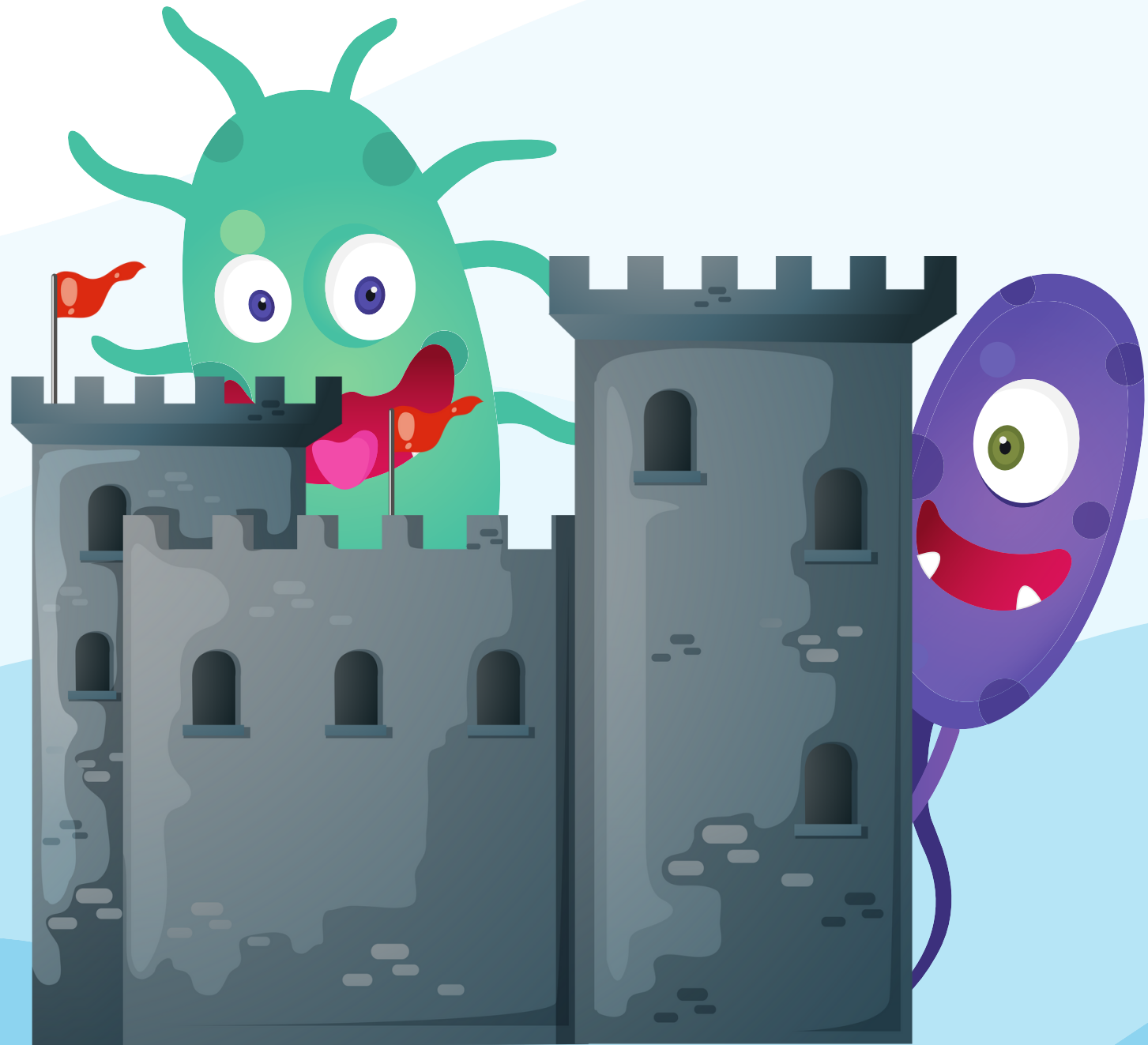




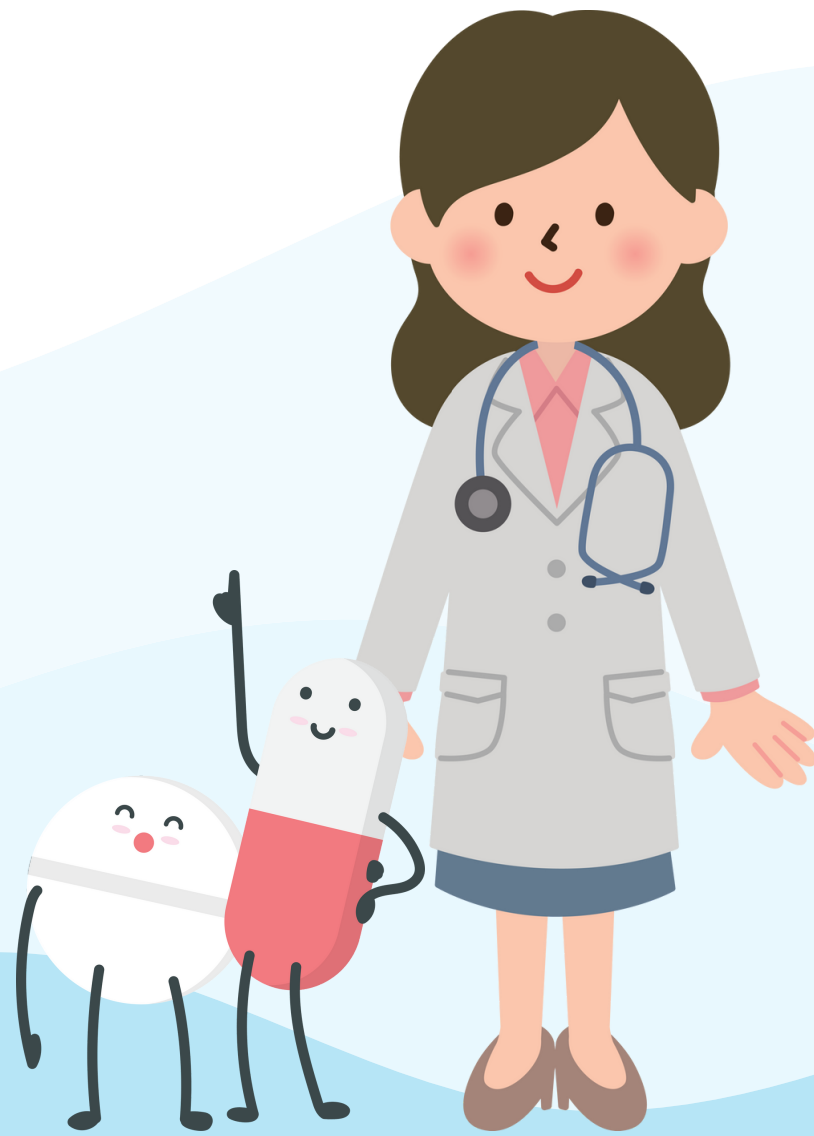
**IMAGINE YOUR BODY IS A CASTLE. IT HAS
THICK WALLS FOR DEFENSE AGAINST
ENEMIES.**



**SOMETIMES, THE ENEMIES ARE SO
STRONG, THAT YOUR CASTLE'S WALLS
ARE NOT ENOUGH TO DEFEND IT.**



WE CALL THE ENEMIES "BACTERIA". WHEN BACTERIA HAS CAPTURED THE CASTLE, YOU GET REALLY SICK.



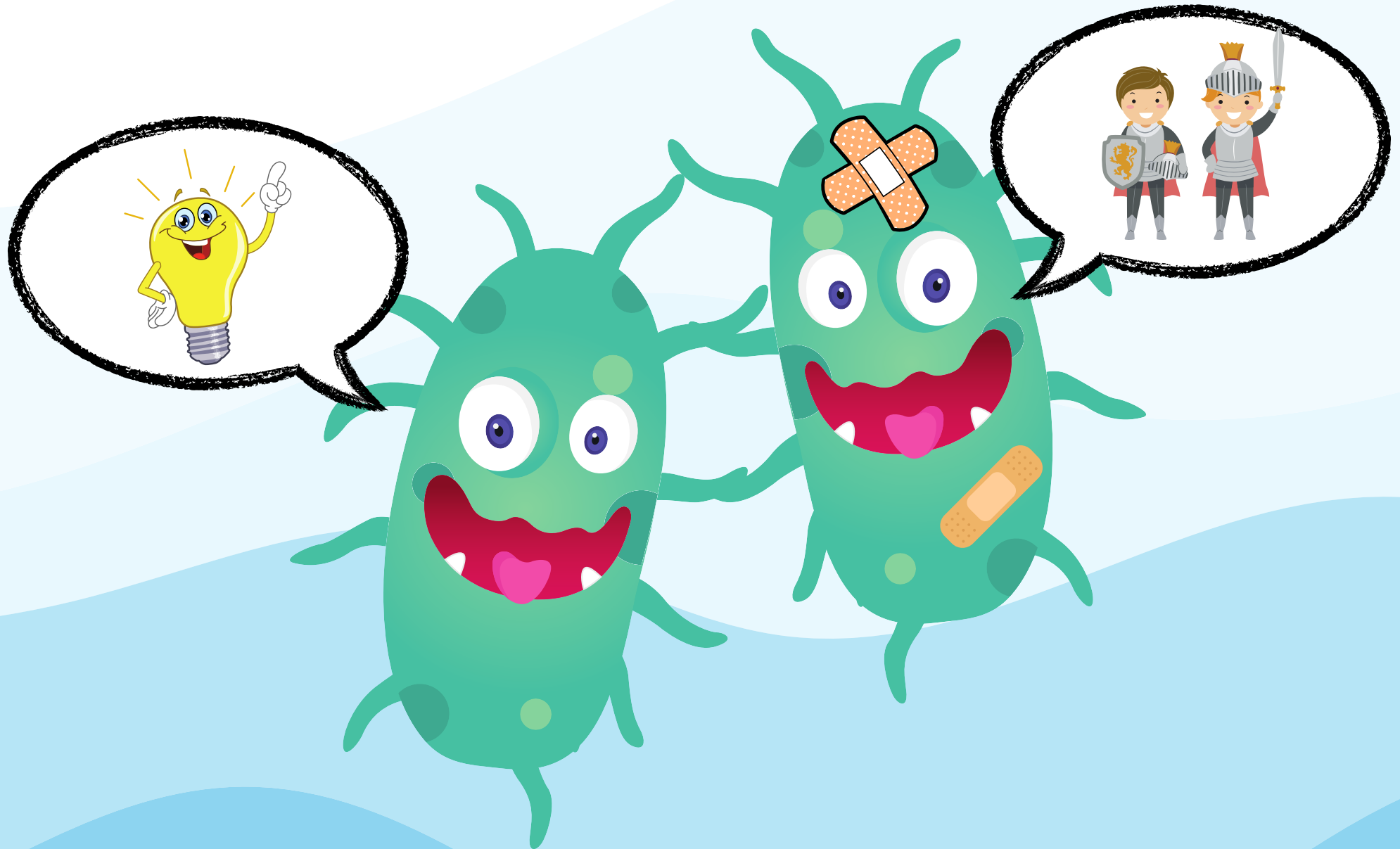
**THEN, YOU GO TO SEE A DOCTOR WHO
WILL GIVE YOU MEDICINE.**



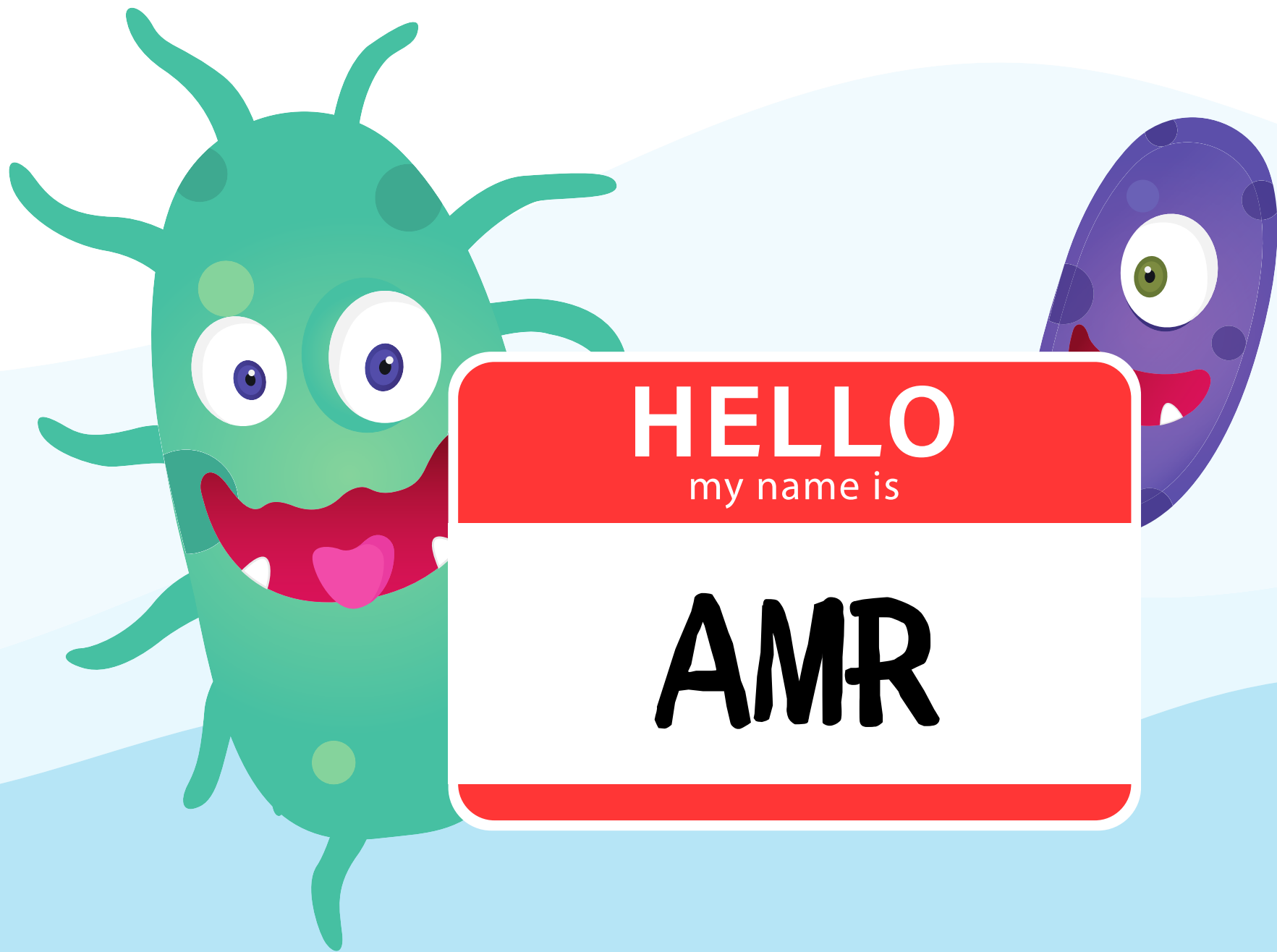
**THIS MEDICINE IS SENDING STRONG
KNIGHTS TO YOUR BODY TO FIGHT THE
BACTERIA. THESE KNIGHTS ARE CALLED
"ANTIBIOTICS".**



**IF EVERYTHING GOES WELL, THE ANTIBIOTICS
WIN AND PROTECT YOUR CASTLE.**



IF SOME BACTERIA ESCAPE FROM THE FIGHT WITH THE ANTIBIOTICS, THEY WILL TELL THEIR FRIENDS WHAT THEY HAVE LEARNED.



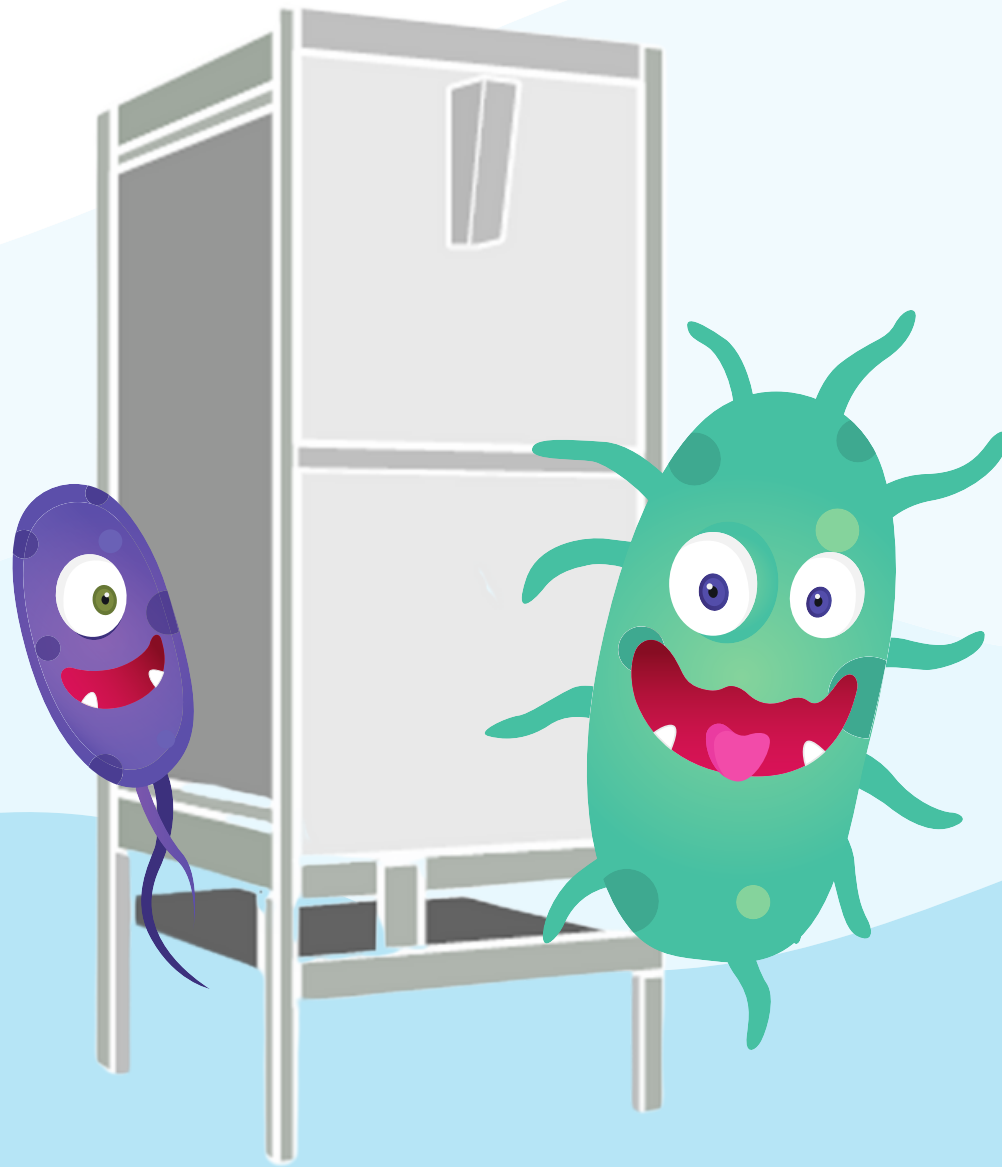
**WHEN BACTERIA HAS LEARNED HOW TO WIN
AGAINST ANTIBIOTICS, WE CALL THEM
ANTIMICROBIAL RESISTANT BACTERIA -
SHORT "AMR".**



**WHEN WE ARE SICK AND TAKE ANTIBIOTICS,
SOME OF THEM CAN GET IN A WASTEWATER
TREATMENT SYSTEM THROUGH OUR TOILET.**



WASTEWATER TREATMENT SYSTEMS ARE LIKE TRAINING CAMPS FOR BACTERIA. A LOT OF BACTERIA CAN CONSTANTLY FIGHT AGAINST JUST A FEW ANTIBIOTICS AND BECOME THE POWERFUL "AMR".



**SOME WASTEWATER TREATMENT SYSTEMS
USE MEMBRANE FILTERS. THESE FILTERS ARE
LIKE A SECURITY GATE WHERE NO BACTERIA
CAN PASS.**



**THESE FILTERS HELP TO KEEP OUR RIVERS
AND LAKES FREE OF BACTERIA AND "AMR",
SO WE DON'T GET SICK.**



**THAT'S WHY WE NEED TO GET MORE
MEMBRANE FILTERS IN WASTEWATER
TREATMENT SYSTEMS!**

HOW CAN YOU HELP TO REDUCE ANTIMICROBIAL RESISTANT BACTERIA?



- **ONLY USE ANTIBIOTICS WHEN PRESCRIBED BY YOUR DOCTOR.**
- **NEVER DEMAND ANTIBIOTICS IF YOUR DOCTOR SAYS YOU DON'T NEED THEM.**
- **ALWAYS TAKE ANTIBIOTICS ACCORDING TO YOUR PRESCRIPTION.**
- **DON'T STOP TAKING ANTIBIOTICS, WHEN YOUR PRESCRIPTION HASN'T YET ENDED.**
- **NEVER SHARE OR USE LEFTOVER ANTIBIOTICS.**